

alp.
Since 1918

**Hand-woven
Flat weave rug
Collection**



Hand-woven in Spain

In La Zubia (Granada), *La Alpujarreña* continues a century-old legacy of hand-woven and hand-knotted rugs and carpets. We use high-quality, natural materials such as pure new wool, cotton, linen and jute to create artisanal rugs in designs from our extensive collection, or can work with the customer to produce unique, bespoke designs.

Our expert artisans can weave beautiful hand-made rugs up to six meters wide in small loop pile, eight meters wide in our Alpujarra Loop, or twelve meters wide in Turkish knot.



Turkish Knot

The *Turkish Knot*, also known as the Ghiordes knot, is a traditional hand-knotted cut pile technique. Our Turkish knot quality is made with 20.800 knots/m² and is available in any classical or modern design.



Al-Jumra

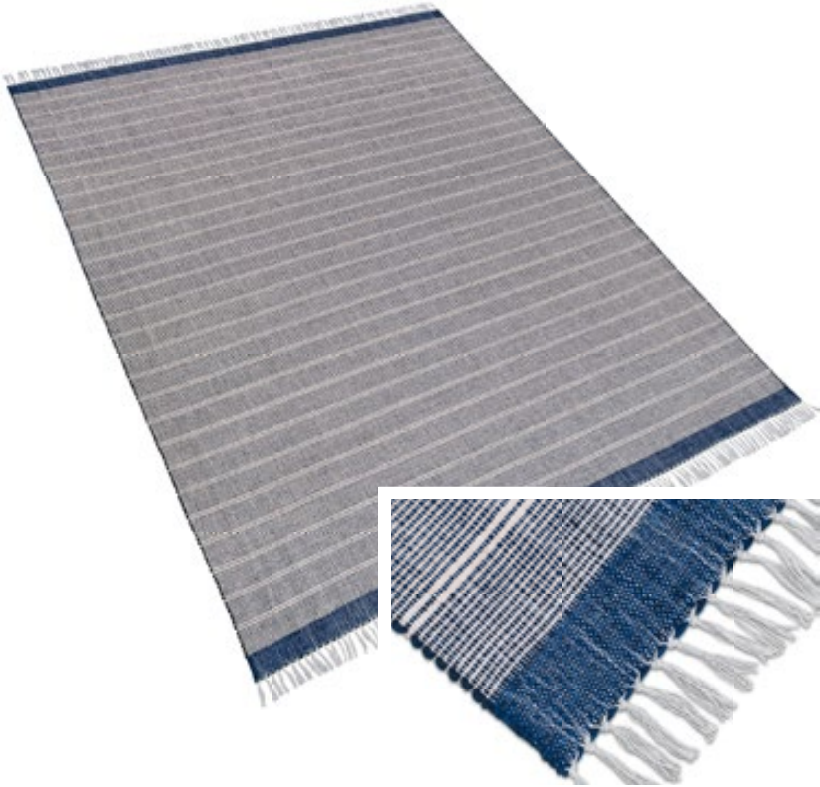
The *Al-Jumra* is our main flat weave technique. Using a high-warp loom prepared with a **natural linen**, we weave the **wool filling** comprised of 12 yarns through the linen warp and separate each rows of filling with a **jute weft**. The possibilities to personalize this rug are endless: select up to two colors for the filling or add a pop of color with a colored linen weft.

All our rugs based on the *Al-Jumra* flat weave can be woven in sizes up to 8 meters, and even adapted to fit staircases.



Al-Jumra Stairs

Same quality as our *Al-Jumra* models, we can adapt the shape to your stairs.



Flat Way

Based on the *Al-Jumra* technique, the *Flat Way* is a thinner design with a 6-yarn **wool filling**. The **natural linen warp** can be left tied at the ends for a natural and reversible look, and the **jute weft** design with spaced double wide bands gives a simple and modern touch to this classic style.



Flat Tetris

A dovetail weave provides a contemporary color block design in this flat 6-yarn **wool** rug. The **natural linen warp** and fringe makes it reversible and the **thin jute weft** is a variation on the typical *Al-Jumra* flat weave.



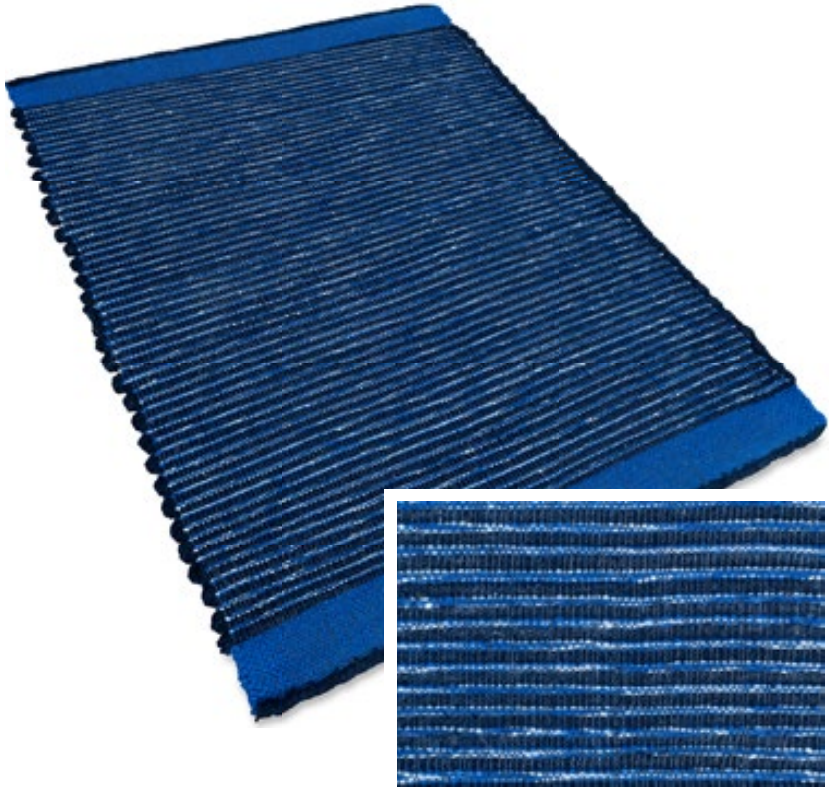
Flat Wool

With 20-yarn **wool filling**, *Flat Wool* is our thickest flat weave, and also incorporates a **wool weft** with a **natural linen warp**. You can choose to leave the fringes open for a reversible style, or hem the ends for a clean, finished look.



Champán

This sparkling, thin flat weave is a twist on the traditional. The shine of a **Viscose and Lurex weft** is complemented by a 10-thread **jute filling** and **cotton warp**.



Flat Blue

Flat Blue substitutes the standard natural linen used in our *Al-Jumra* technique with a **blue linen warp**. A **wool weft** and the **12-yarn wool filling** finish off this hand-woven rug in shades of blue. You can select your own colors to complement this blue linen warp.



Naranja y Chocolate

The **corded wool filling** in *Naranja y Chocolate* introduces a new depth to the traditional *Al-Jumra* weave and is accompanied by **double linen weft** and **white cotton warp**. See our linen color card for endless color option.



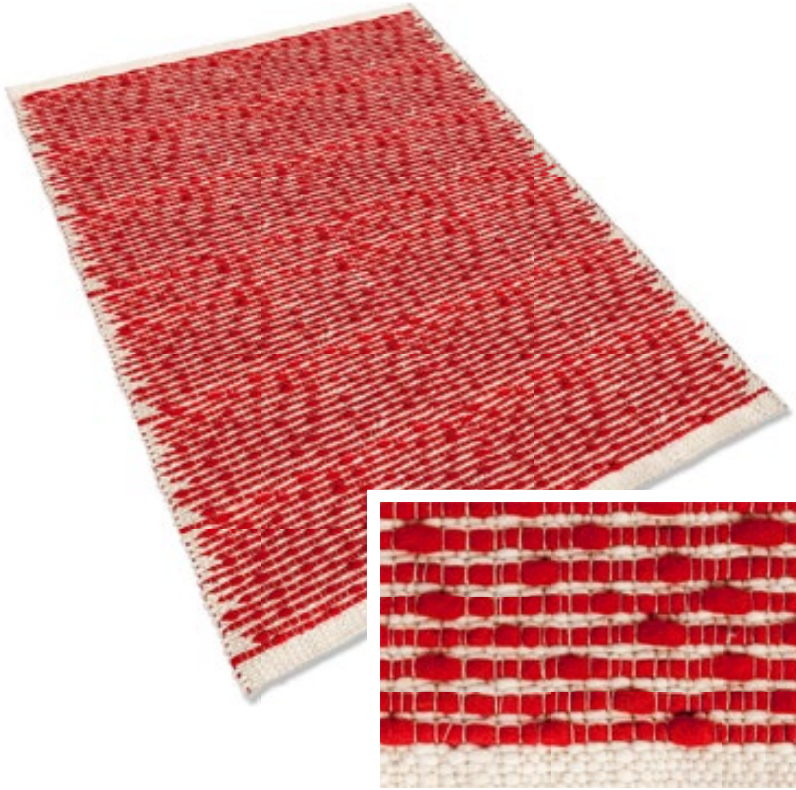
Vainilla y Fresa

This flat weave incorporates a **thin wool filling** and a **double linen weft**. The **cotton warp** gives additional flexibility.



Flat

The Flat design showcases the rich thickness of the felted wool filling. The single yarn is woven through a natural linen warp and thick jute weft.



Adobe

Each *Adobe* rug is completely one of a kind, incorporating a thick felted wool filling and a thinner felted wool weft.



Café Au Lait

The warm and inviting *Café Au Lait* design brings a natural touch to any room. The jute and felted wool filling is tied together with a multi-strand cotton warp.



Alpujarra Knot

The *Alpujarra* loop pile is a traditional technique from the Granada region that dates to the XII century. Using a high-warp loom, our master weavers wrap the **wool** around a thin iron bar to create a plush loop pile, and the **jute weft** and **cotton warp** provide a resistant backbone to the rug.

Alpujarra is available in a standard loop (11/12mm pile height) or a small loop (8/9mm) and in designs incorporating up to 6 colors.



Alpujarra Color

Alpujarra Color rugs can be made in any design to incorporate 2-3 different colored loops. Our Model 2000, pictured above, is a two-tone Alpujarra knot design that has been part of our catalog for over 50 years. The standard **wool loop**, **jute weft** and **cotton warp** make it an instant classic and stunning complement to any room. See last pages for designs that can be adapted to *Alpujarra Color* or send us your bespoke design.



Alpujarra Color II

Alpujarra Color II can be personalized to incorporate 4-6 colors in a loop design. C-VII, in the photo above, is part of La Alpujarreña's Cubist series, drawn by the factory designers in the 1930s under the Art-Deco movement. The **wool loop** design incorporates 6 colors and this rug is structured with a **cotton warp** and **jute weft**. Consult our *Contemporary Design* catalog or contact us for more designs in this series.



Jute Tulip

The *Jute Tulip* incorporates a new material into this traditional technique. The small Alpujarra loop in **natural jute** gives a rustic touch to the design in colored **wool loop pile**.



Jewels One

Jewels One is a new design combining three rows of standard Alpujarra loop in **combed wool** and one row of small loop in **natural silk**. You will treasure this design for years to come.



Jewels Two

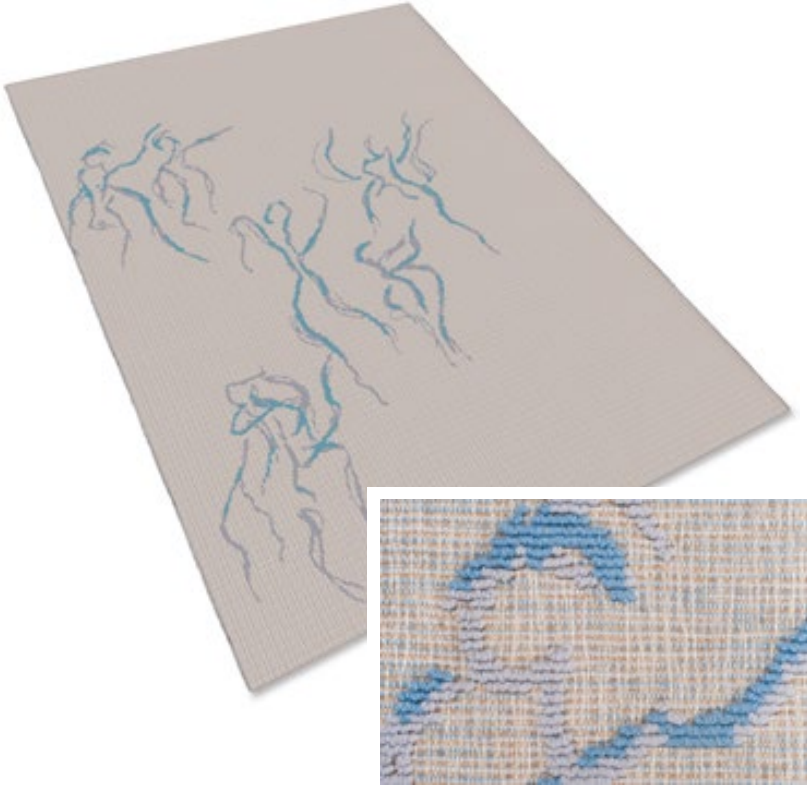
Jewels Two incorporates two rows of small loop in **corded wool** and one row of small loop in **natural silk**.



Alpujarra Relief

Alpujarra Relief combines the raised *Alpujarra* knot and flat *Al-Jumra* weave to create beautiful designs. The **wool loop** contrasts with the ground, where the **natural linen warp** and **jute weft** and the wool passing from one loop to the next is visible. For an entirely white rug (pictured), you can select a **cotton warp** and **weft** with a white wool, or choose up to two wool colors for your ground or loop.

See last pages for more *Alpujarra Relief* patterns or contact us to discuss bespoke designs and color options.

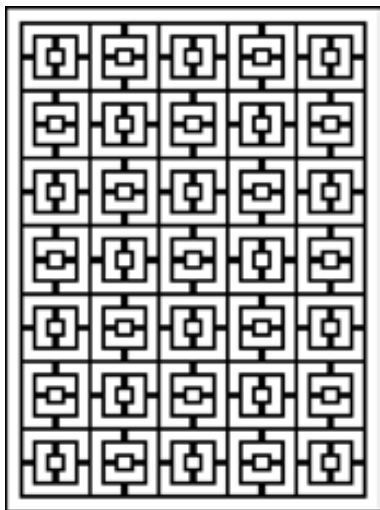


Flat Dance

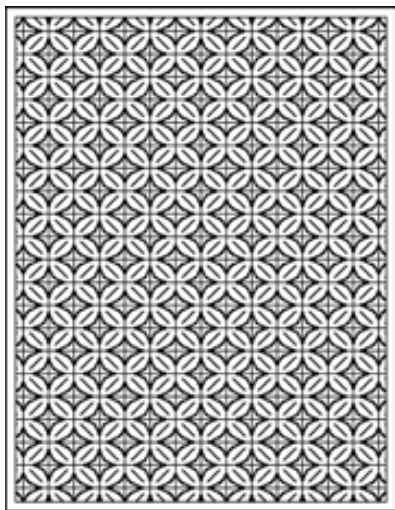
A modern take on our *Alpujarra Relief*, *Flat Dance* incorporates a two-tone small loop **wool knot** and 6-yarn background in mixed colors. A **natural cotton warp** and **thin jute weft** are the perfect complement.

Custom designs are possible incorporating up to 4 different colors.

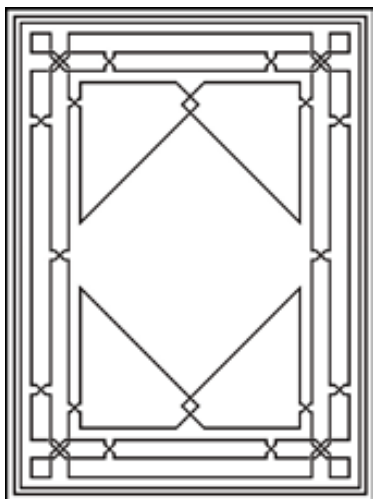
Alpujarra Patterns (Color or Relief)



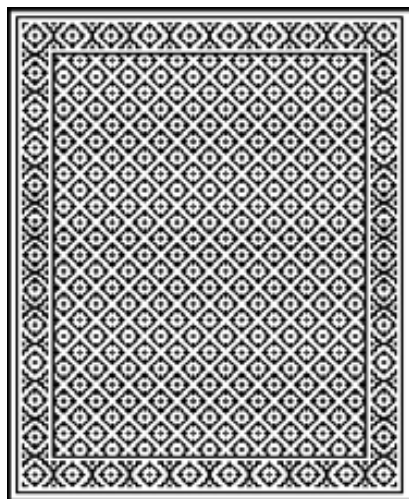
Mod. 3350



Mod. 10101

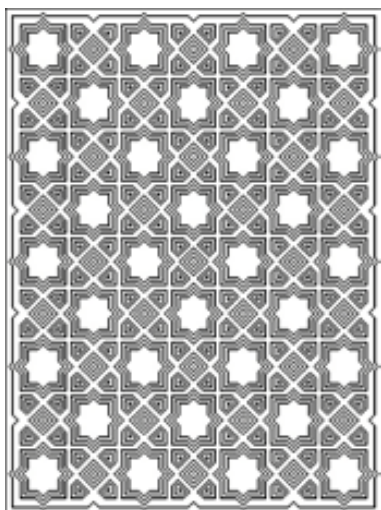


Mod. 3330

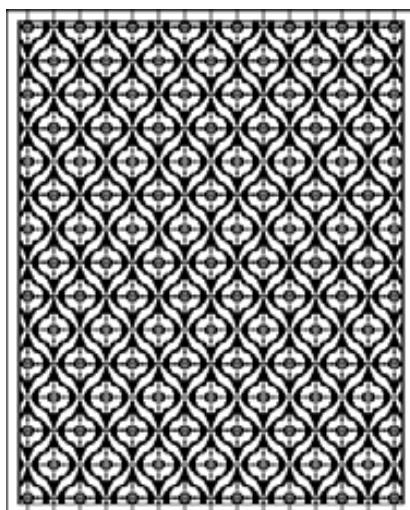


Mod. 3336

Alpujarra Patterns (Color or Relief)



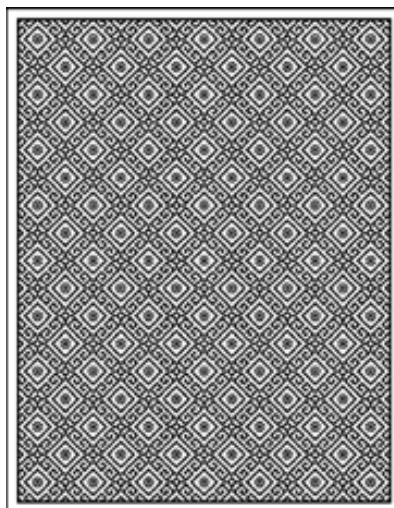
Mod. Mudéjar



Mod. Diamonds

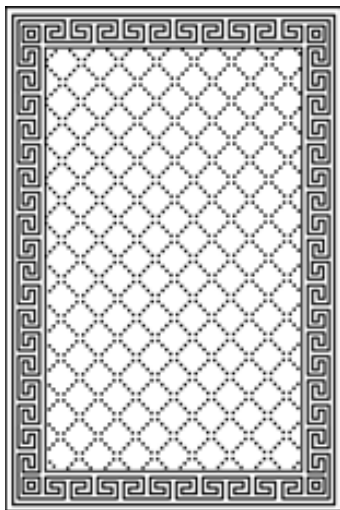


Mod. Beauvais

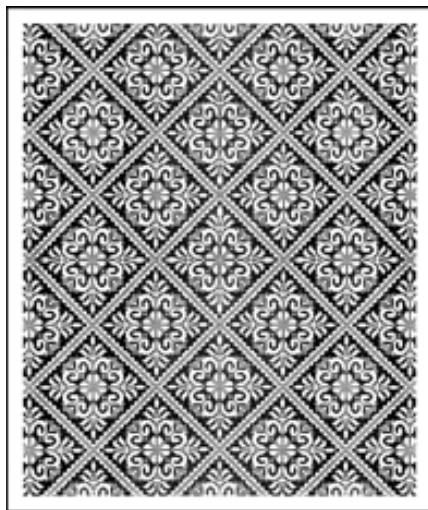


Mod. 3340

Alpujarra Patterns (Color or Relief)



Mod. 3332



Mod. Alberto



Mod. Arabesco



Mod. Empire

Materials

Below you have the standard materials traditionally used in each design. Feel free to consult us if you would like to personalize any of these materials.

Technique	Design	Warp		Weft				Filling			Loop		
		Linen	Cotton	Jute	Linen	Cotton	Wool	Other	Thin	Standard	Thick	Standard	Small
Turkish Knot	Turkish Knot		X	X									
	Turkish Knot (Flex)		X			X							
Al-Jumra Weave	Al-Jumra	X		X						X			
	Flat Way	X		X					X				
	Flat Tetris	X		X					X				
	Flat Wool	X					X					X	
	Champán		X					X	X				
	Flat Blue	x*					X			X			
	Naranja y Chocolate		X		X				X				
	Vainilla y Fresa		X		X				X				
	Flat	X		X								X	
	Adobe	X					X					X	
Café Au Lait		X	X								X		
Alpujarra Knot	Alpujarra		X	X									X
	Alpujarra Color		X	X									X
	Alpujarra Color II		X	X									X
	Jute Tulip		X	X									X
	Jewels One		X			X						X	
	Jewels Two		X			X							X
	Alpujarra Relief	X		X						X			X
	Alpujarra Relief (White)		X			X				X			X
Flat Dance		X	X					X				X	

*Colored linen weft

Warp: Stationary yarns fitted lengthwise on the loom.

Weft: Thin yarns that divides rows of filling. Woven over and under the warp.

Filling: Yarns, usually thicker than the weft, woven over and under the warp or knotted in the *Alpujarra Loop* that are responsible for the overall thickness and color of the rug.

Loop: The standard loop height is 11-12mm, Small loop height is 8-9mm.



Maintenance

For our hand-woven qualities, we generally recommend dry cleaning. For water soluble stains, apply a sponge or damp towel dipped solution of water with soap specifically designated for wool over the stained surface and remove the excess moisture with a clean cloth or paper napkin. For oil-based stains, moisten the corner of a towel with a small amount of dissolvent product (alcohol, acetone, thinner) and apply towel to the stained area. We recommend the use of soaps or neutral detergents (neither alkaline nor those with a high pH).



alp.

Federico García Lorca, 30
18140 La Zubia
Granada (Spain)
Teléfono +34 958 590136
export@alpcarpets.com

BY ALFOMBRAS ARTESANALES LA ALPUJARREÑA S.L.U.